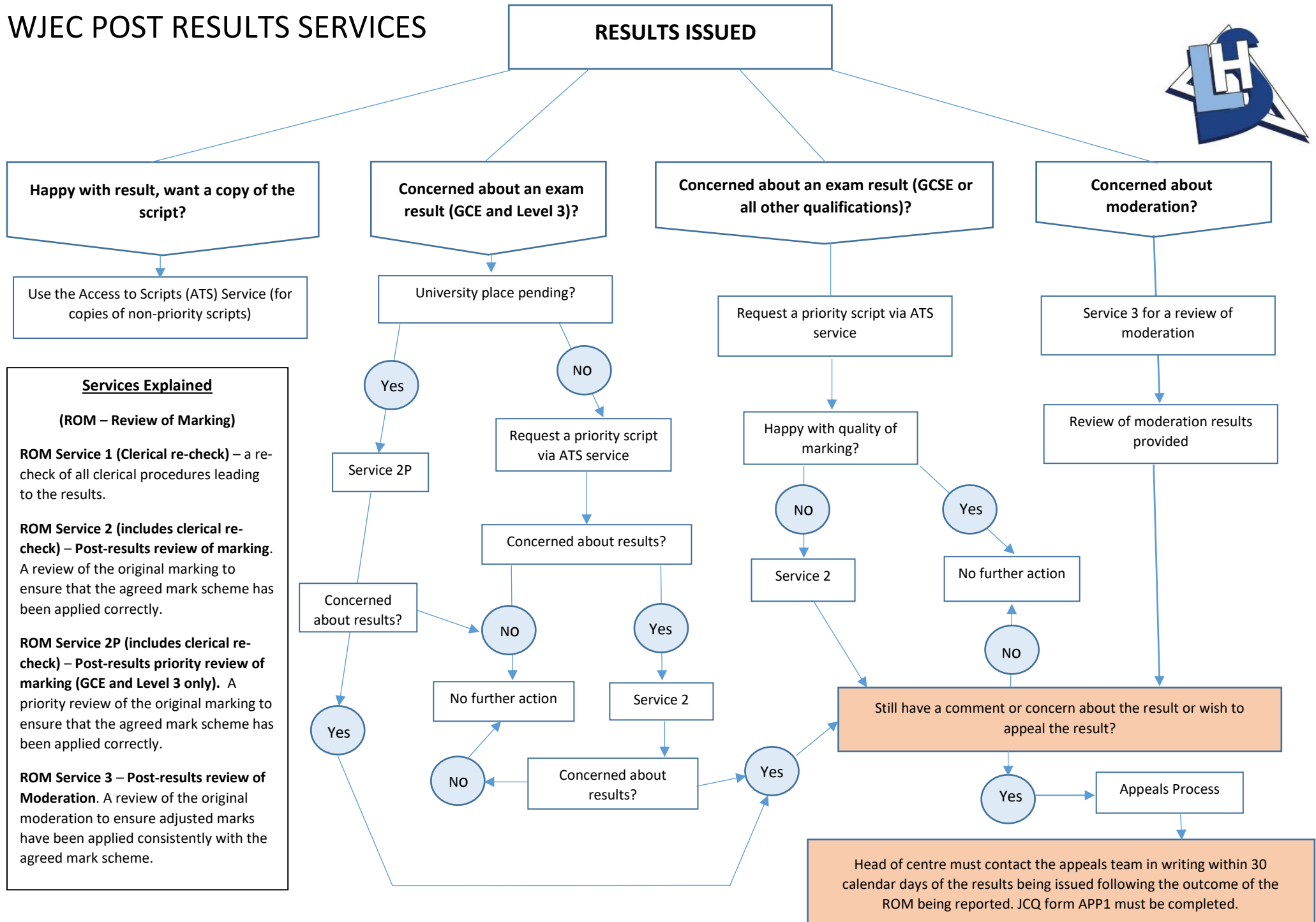


WJEC POST RESULTS SERVICES



Services Explained

(ROM – Review of Marking)

ROM Service 1 (Clerical re-check) – a re-check of all clerical procedures leading to the results.

ROM Service 2 (includes clerical re-check) – Post-results review of marking. A review of the original marking to ensure that the agreed mark scheme has been applied correctly.

ROM Service 2P (includes clerical re-check) – Post-results priority review of marking (GCE and Level 3 only). A priority review of the original marking to ensure that the agreed mark scheme has been applied correctly.

ROM Service 3 – Post-results review of Moderation. A review of the original moderation to ensure adjusted marks have been applied consistently with the agreed mark scheme.

Head of centre must contact the appeals team in writing within 30 calendar days of the results being issued following the outcome of the ROM being reported. JCQ form APP1 must be completed.